

**Naixer**<sup>®</sup>

PRECISION MANUFACTURER FOR  
**ICE MAKERS**

**ICE MACHINE CATALOG**

**Naixer**<sup>®</sup>  
PRECISION MANUFACTURER FOR ICE MAKERS

**Guangzhou Naixer Refrigeration Equipment Co., Ltd.**

No. 14, Sanqi Street, Qianfeng North Road, Shiji Village,  
Shiji Town, Panyu District, Guangzhou City

[marketing@naixer.com](mailto:marketing@naixer.com)

[www.naixer.com](http://www.naixer.com)



Guangzhou Naixue Refrigeration Equipment Co., Ltd.

SINCE 2010

# CONTENTS

## 01

### BRAND INTRODUCTION

Brand Story  
Innovation & Technology  
Manufacturing Excellence  
End-to-End Solution  
Global Presence

Cube Ice Machine  
Jelly Ice Machine  
Crescent Ice Machine  
Large Cube Ice Machine  
Nugget Ice Machine  
Flake Ice Machine

## 02

### COMMERCIAL ICE MAKER

## 03

### APPLICATION SOLUTIONS

Hospitality  
Food Service  
Chain Convenience Stores  
Tea beverage/Coffee Chains  
Shared Office  
SuperMarket  
Fresh Food Market  
Entertainment

Comprehensive Warranty  
Genuine Parts & Easy Maintenance  
Professional Training  
Contact Our Service Team

## 04

### SERVICE & SUPPORT

**16+**  
**YEARS**

16 years of industry experience

Founded in 2010, Naixer Refrigeration Equipment Co., Ltd. is a global leader in the commercial ice-making industry, specializing in the design, R&D, manufacturing, and sales of premium refrigeration equipment.

ICE MAKER



# BRAND INTRODUCTION

Square Meters Factory

**30,000m<sup>2</sup>**

We translate innovation into excellence within our 30,000 m<sup>2</sup> smart factory, featuring automated lines and IoT-driven quality control. With 200+ professionals and ISO9001-certified processes, we ensure reliable quality, on-time delivery, and rapid prototyping – backed by an annual capacity of 200,000+ units.



Professional Technicians

**200+**

Technical Patents

**300+**

Our technological edge is powered by a portfolio of 300+ patents and certifications. This robust intellectual property foundation fuels our R&D, enabling continuous breakthroughs in energy efficiency, durability, and smart functionality.

Served Countries

**100+**

Our proven track record serving clients in over 100 countries gives us deep insights into diverse market demands. Through our "Global Resources, Local Insight" approach, we deliver perfectly tailored solutions – from high-volume production for international chains like KFC and Luckin Coffee to specialized customization for niche markets.

Naixer is more than a manufacturer; we are a strategic partner committed to reducing operational costs and driving success for businesses worldwide through intelligent, reliable refrigeration technology.

# INNOVATION & TECHNOLOGY



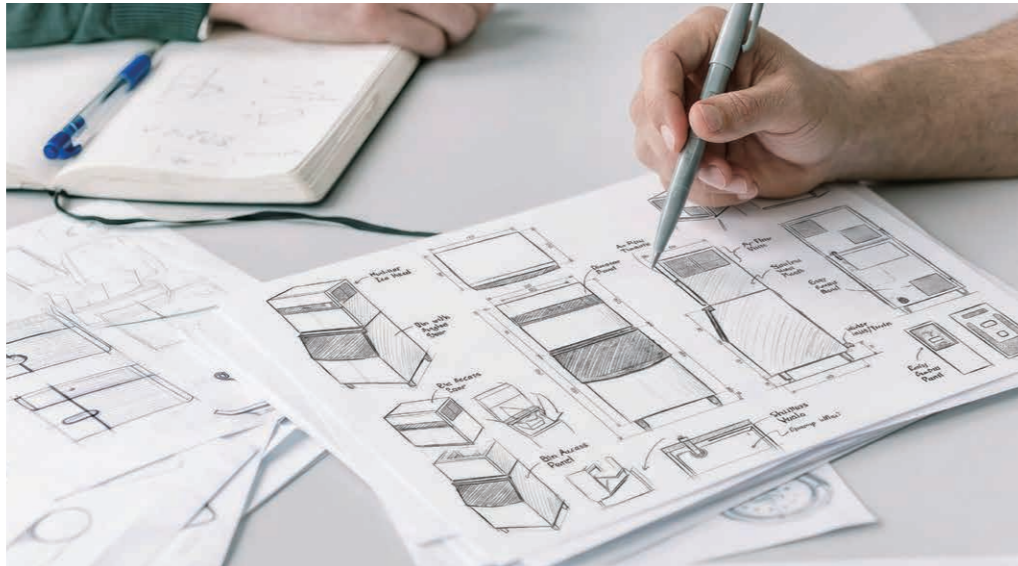
## Forward-Thinking R&D

Our dedicated R&D center, staffed by a team of over 20 engineers, is our engine of continuous improvement. We collaborate with global technology partners and listen to feedback from our clients in over 100 countries to ensure that our next generation of innovations will continue to set the industry standard and protect your investment.



## Where Innovation Meets Demand

The Naixer R&D Center is our strategic core – where global market needs become engineering excellence. Guided by "Global Resources, Local Insight," our team of 20+ engineers doesn't just build machines; we architect solutions. We study culinary habits, analyze kitchen bottlenecks, and forecast trends to ensure every patent and prototype is purpose-driven – delivering real answers to your challenges in efficiency, hygiene, and total cost of ownership.



# TECHNOLOGY



## One-Touch Automatic Cleaning System

Initiates a thorough, programmable wash cycle that scrubs away mineral deposits and residues from the internal water system and ice-making path with a single touch.



## Integrated UV-C Sterilization Lamp

Split-type ice machine integrates UV sterilization technology to efficiently produce ice while continuously purifying the ice storage environment. Whether used for preparing cold drinks or preserving fresh ingredients, it ensures your customers enjoy a cleaner, safer ice experience.

# PRECISION MANUFACTURING



At Naixer, product reliability is engineered into every machine from the ground up. Our 30,000 m<sup>2</sup> integrated manufacturing facility serves as the controlled environment where this process unfolds. Here, we combine advanced automation, precise engineering protocols, and multi-stage quality inspection to transform raw materials into commercial refrigeration equipment trusted in over 100 countries.



Our journey begins with millimeter-perfect precision. Automated laser cutting ensures every component starts with flawless edges, while CNC press brakes and punching systems form sheet metal with repeatable accuracy. This eliminates human error at the source, guaranteeing perfect fit and structural integrity for every frame and panel.



Before leaving our facility, every unit undergoes a gauntlet of validation. Automated test stations verify cooling performance, pressure, and electrical safety. Each refrigeration circuit is tested for leaks with pinpoint accuracy. A sample from every batch endures extended 'burn-in' testing under simulated extreme conditions, ensuring the durability promised by our patents is delivered in reality.



# AUTOMATIC CUTTING PROCESS

**±0.1 mm**  
Laser Cutting

**±0.05 mm**  
Forming Repeatability

**100%**  
Dimensional Consistency



# ONE-STOP SOLUTION



Naixer is more than a manufacturer. We are your single-source partner, providing integrated solutions that encompass design, precision manufacturing, global logistics, and lifelong support—ensuring reliability, efficiency, and peace of mind for your business.

## Collaborative Engineering

It starts with your unique operational DNA. Our application engineers work alongside your team to define key needs – ice type, daily volume, space, and energy goals. These insights drive a tailored engineering solution, brought to life through advanced 3D simulation. The result: optimized performance and seamless integration before production even begins.



## Precision Cooling Worldwide Delivery

We manage it all – from factory inspection and professional packaging to customs coordination and on-site installation guidance. For precision equipment, we use customized packaging built to withstand long-distance sea and land transit. Every step is traceable, every link assigned dedicated personnel – ensuring you enjoy full logistics visibility from start to finish.



## Precision Manufacturing & Scalability

Your approved design enters our vertically-integrated, digital-ly-monitored production system. From automated laser cutting through precision forming and skilled assembly, every step is tracked and controlled. This ensures both uncompromising quality for individual units and the reliable scalability required for projects of any size – from boutique hotels to national chains.



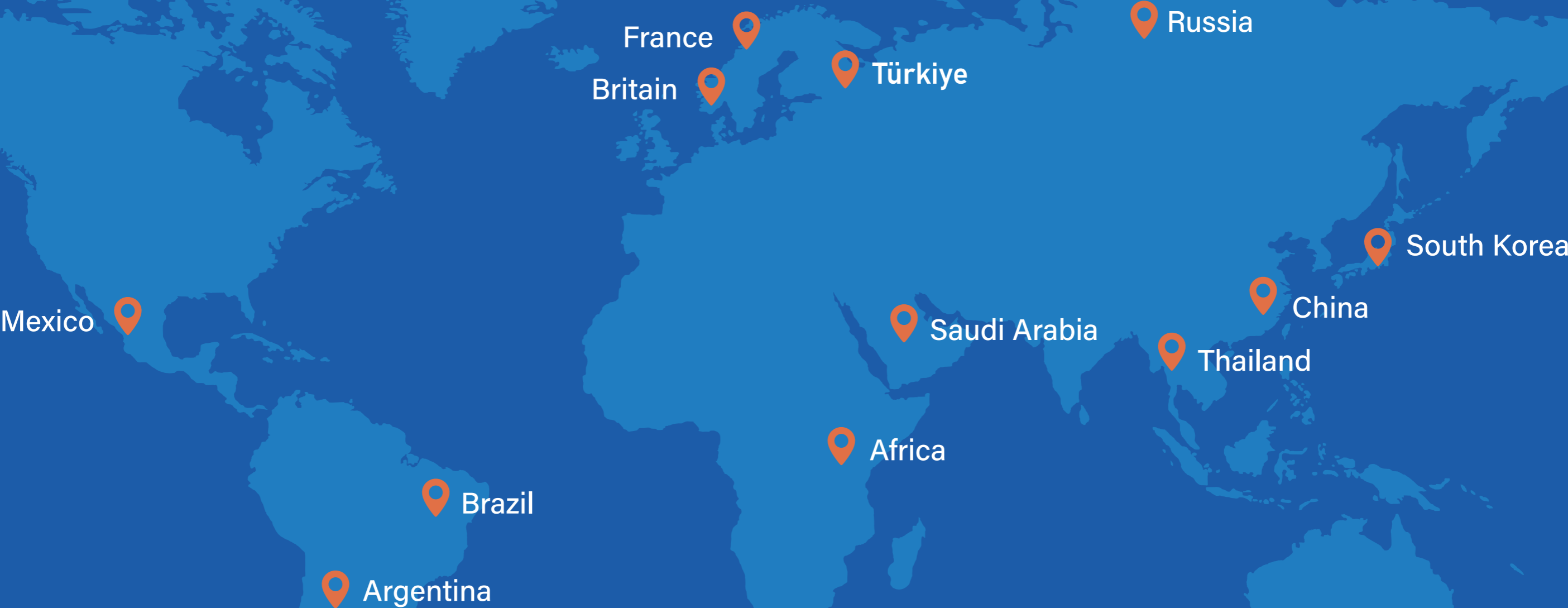
## Professional After-Sales Service

Naixer support is built on three pillars: a global service network for on-the-ground help, genuine parts that guarantee lasting performance, and direct access to technical experts. The result? Faster response, less downtime, and proactive advice – so your investment keeps performing year after year.



# GLOBAL FOOTPRINT

SINCE 2010-2026

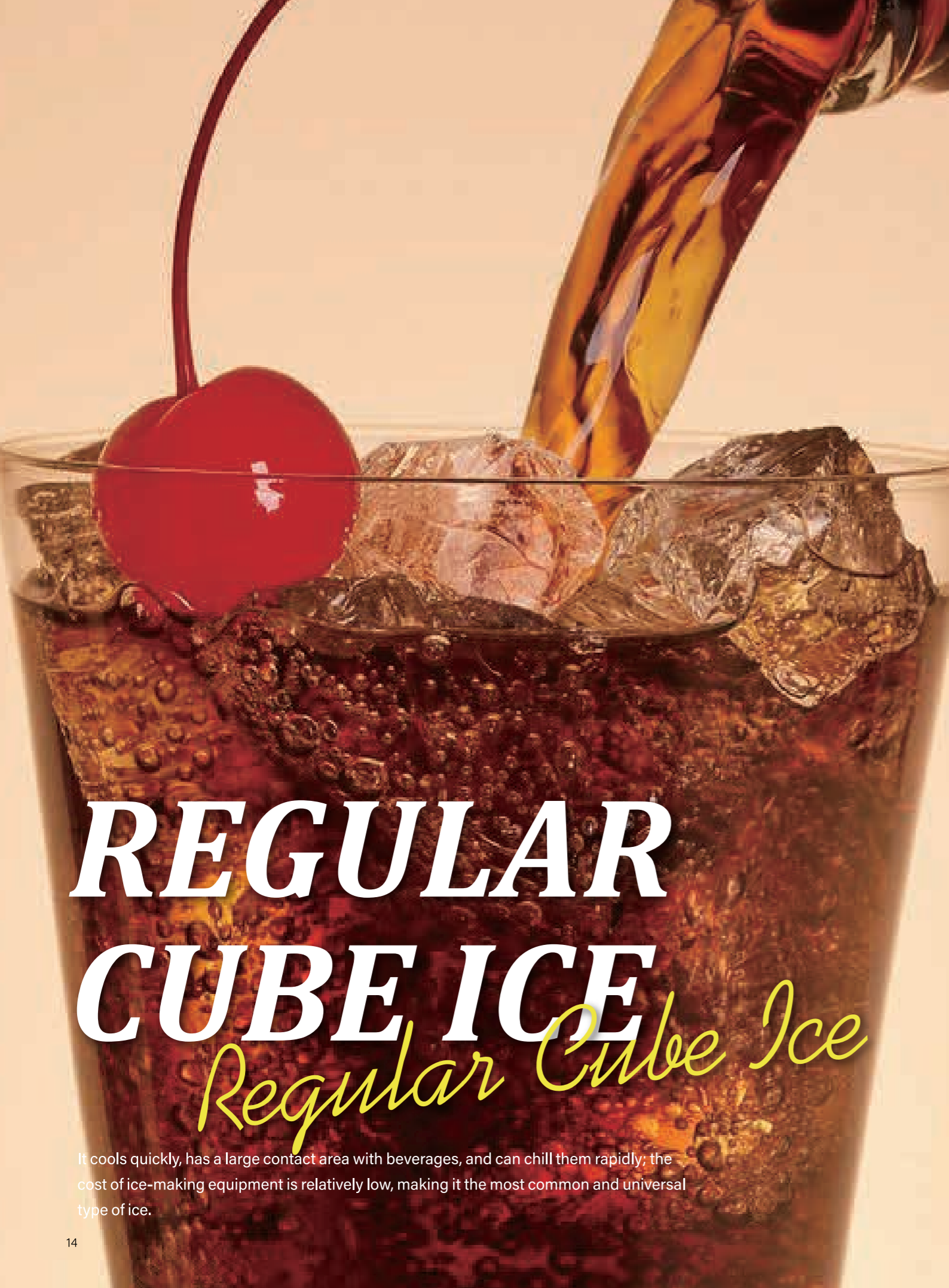


# 5000+

Trusted by 5,000+ commercial clients across the globe, including leading cafes, hotels, restaurant chains, and retail markets.

# 100+

The need for perfect ice is global; the solution must be local. Our presence in 100+ countries gives us not just market access, but deep contextual understanding. Your solution comes pre-refined by global experience.



# **REGULAR CUBE ICE**

*Regular Cube Ice*

It cools quickly, has a large contact area with beverages, and can chill them rapidly; the cost of ice-making equipment is relatively low, making it the most common and universal type of ice.



# **JELLY ICE**

*Jelly ice*

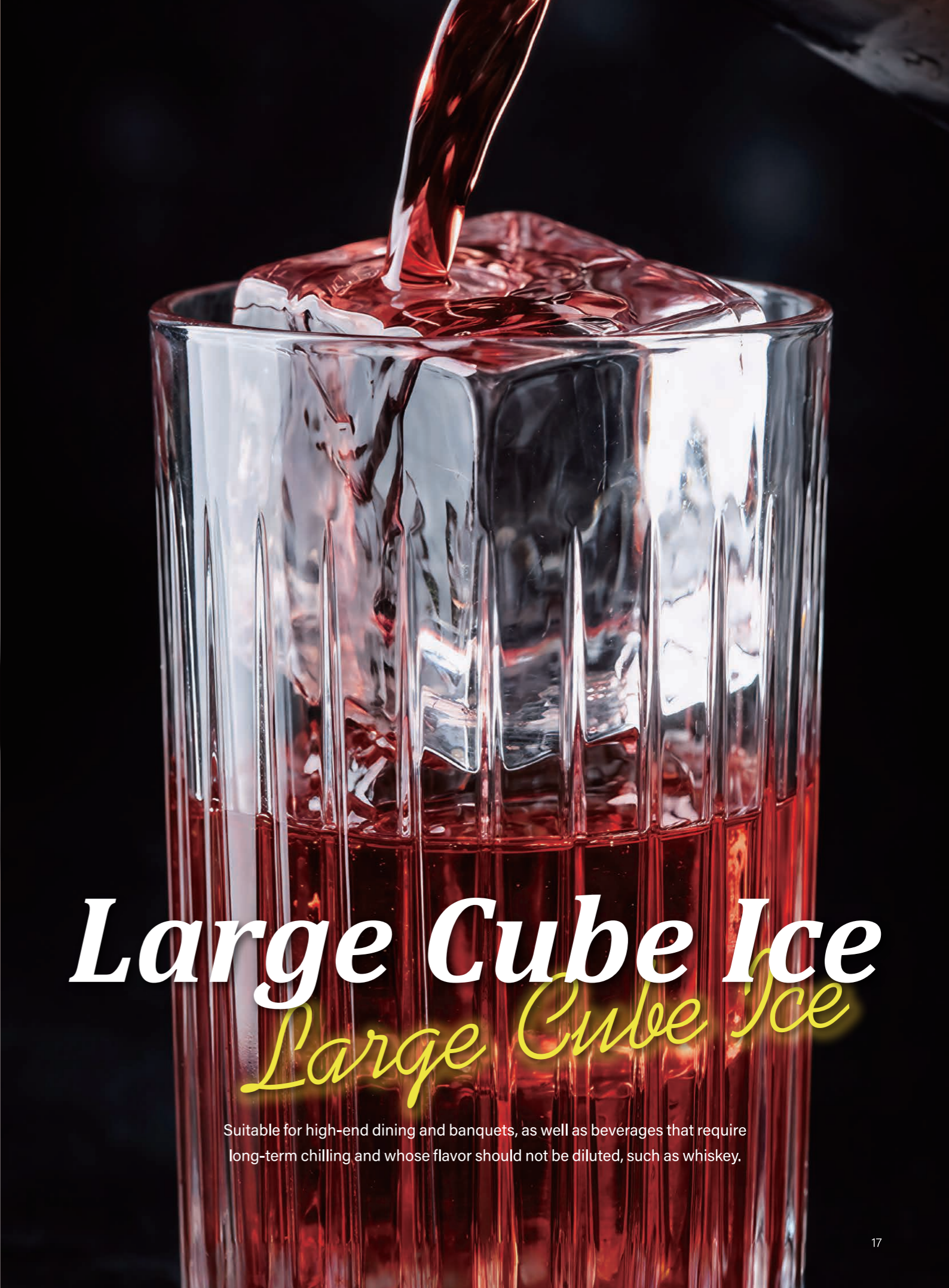
It has an extremely hard texture, high density, and melts very slowly; its crystal-clear appearance greatly enhances the visual appeal of the drink.



# *Crescent Ice*

*Crescent Ice*

The slower melting speed prevents the beverage from being diluted too quickly, preserving its flavor; the curved edge reduces impact on the liquid, allowing it to flow well in the cup and preventing it from getting stuck.



# *Large Cube Ice*

*Large Cube Ice*

Suitable for high-end dining and banquets, as well as beverages that require long-term chilling and whose flavor should not be diluted, such as whiskey.



# *Nugget Ice*

*Nugget Ice*

It has the best resistance to melting, meaning it is the least likely to melt; its fine particles can fill any irregular gaps in food or utensils.



# *Flake Ice*

*Flake Ice*

It has a very large contact area and cools down extremely quickly; its soft texture makes it easy to shape and fits well to the surface of the object being cooled.



# STANDALONE ICE MAKER

The independent ice station. Simply connect and run — no built-ins, no complex install. Delivers clear, hard ice wherever you need it, perfect for busy kitchens, events, or backup production. Ready to move, ready to perform.

# CUBE ICE MACHINE

Integrated mechanism ice machine

24-Hour Ice-Making Test Conditions:

- Ambient Temperature: 25°C
- Water Supply Temperature: 20°C



**TH-80B**



**TH-120B**



**TH-150B**



**TH-210B**



**TH-260B**

Model	Dimension (W*D*H)	Daily Capacity	Bin Capacity	Cooling	Power	Ice Cube Trays	Ice Size	Refrigerant
TH-80B	425*495*760mm	80lb/36kg 24h	12kg	Air-cooled	220V/50Hz/330w	45	22*22*22mm	R290
TH-120B	530*550*850mm	120lb/54kg 24h	20kg	Air-cooled	220V/50Hz/370w	72	22*22*22mm	R290
TH-150B	665*710*960mm	150lb/68kg 24h	45kg	Air-cooled	220V/50Hz/750w	80	22*22*22mm	R290
TH-210B	660*690*920mm	210lb/95kg 24h	45kg	Air-cooled	220V/50Hz/750w	90	22*22*22mm	R290
TH-260B	660*690*920mm	260lb/118kg 24h	45kg	Air-cooled	220V/50Hz/950w	108	22*22*22mm	R290



# BUILT-IN ICE MAKER

Hidden in design, ready at your call. Integrates seamlessly into cabinetry or refrigeration, delivering pure, professional ice without cluttering your space. The silent partner to modern living—where elegance meets effortless access.

# CUBE ICE MACHINE

Built-in Ice MACHINE

24-Hour Ice-Making Test Conditions:

- Ambient Temperature: 25°C
- Water Supply Temperature: 20°C



**TH-E30**



**BT-120**



**BT-150**



**BT-210**



**BT-260**

Model	Dimension (W*D*H)	Daily Capacity	Bin Capacity	Cooling	Power	Ice Cube Trays	Ice Size	Refrigerant
TH-E30	420*595*860mm	80lb/36kg 24h	12kg	Air-cooled	220V/50Hz/330w	40	22*22*22mm	R290
BT-120	500*600*745mm	120lb/54kg 24h	20kg	Air-cooled	220V/50Hz/445w	72	22*22*22mm	R290
BT-150	680*600*750mm	150lb/68kg 24h	51kg	Air-cooled	220V/50Hz/445w	80	22*22*22mm	R290
BT-210	680*600*750mm	210lb/95kg 24h	51kg	Air-cooled	220V/50Hz/445w	90	22*22*22mm	R290
BT-260	680*600*750mm	260lb/118kg 24h	51kg	Air-cooled	220V/50Hz/445w	108	22*22*22mm	R290



# MODULAR ICE MACHINE

Direct faucet connection, one-touch cleaning. High-capacity bin built for restaurant rush hours—keeps ice flowing when demand peaks. Food-safe, adjustable thickness, auto-stop when full. Uninterrupted performance for busy kitchens.

**Series B**

# CUBE ICE MACHINE

Standalone Ice Maker - Series B

24-Hour Ice-Making Test Conditions:  
 • Ambient Temperature: 25°C  
 • Water Supply Temperature: 20°C



**TH-280B**



**TH-320B**



**TH-420B**



**TH-500B**



**TH-700B**

Model	Dimension (W*D*H)	Daily Capacity	Bin Capacity	Cooling	Power	Ice Cube Trays	Ice Size	Refrigerant
TH-280B	560*820*1490mm	280lb/120kg 24h	180kg	Air/Water-cooled	220V/50Hz/850w	120	22*22*22mm	R404A
TH-320B	560*820*1630mm	320lb/145kg 24h	180kg	Air/Water-cooled	220V/50Hz/1050w	156	22*22*22mm	R404A
TH-420B	560*820*1630mm	420lb/190kg 24h	180kg	Air/Water-cooled	220V/50Hz/1100w	182	22*22*22mm	R404A
TH-500B	760*820*1700mm	500lb/227kg 24h	300kg	Air/Water-cooled	220V/50Hz/1200w	198	22*22*22mm	R404A
TH-700B	760*820*1700mm	700lb/318kg 24h	300kg	Air/Water-cooled	220V/50Hz/1500w	234	22*22*22mm	R404A

# CUBE ICE MACHINE

Standalone Ice Maker - Series B

24-Hour Ice-Making Test Conditions:  
 • Ambient Temperature: 25°C  
 • Water Supply Temperature: 20°C



**TH-1000B**



**TH-1200B**



**TH-1500B/TH-2000B**



**TH-3000B**



**TH-4000B**

Model	Dimension (W*D*H)	Daily Capacity	Bin Capacity	Cooling	Power	Ice Cube Trays	Ice Size	Refrigerant
TH-1000B	760*820*1935mm	1000lb/450kg 24h	300kg	Air/Water-cooled	220V/50Hz/2680w	342	22*22*22mm	R404A
TH-1200B	760*820*1935mm	1200lb/545kg 24h	300kg	Air/Water-cooled	220V/50Hz/2680w	440	22*22*22mm	R404A
TH-1500B	1230*845*1910mm	1500lb/680kg 24h	500kg	Air/Water-cooled	220V/50Hz/3700w	576	22*22*22mm	R404A
TH-2000B	1230*845*1910mm	2000lb/900kg 24h	500kg	Air/Water-cooled	380V/50Hz/3700w	684	22*22*22mm	R404A
TH-3000B	1230*845*2575mm	3000lb/1360kg 24h	500kg	Water-cooled	220V/50Hz/7400w	1152	22*22*22mm	R404A
TH-4000B	1230*845*2775mm	4000lb/1800kg 24h	500kg	Water-cooled	380V/50Hz/7400w	1368	22*22*22mm	R404A

# MODULAR ICE MACHINE

Direct faucet connection, one-touch cleaning. High-capacity bin built for restaurant rush hours—keeps ice flowing when demand peaks. Food-safe, adjustable thickness, auto-stop when full. Uninterrupted performance for busy kitchens.

**Series C**



# CUBE ICE MACHINE

Standalone Ice Maker - Series C

24-Hour Ice-Making Test Conditions:

- Ambient Temperature: 25°C
- Water Supply Temperature: 20°C



**TH-320C**



**TH-500C**



**TH-700C**



**TH-1000C**

Model	Dimension (W*D*H)	Daily Capacity	Bin Capacity	Cooling	Power	Ice Cube Trays	Ice Size	Refrigerant
TH-320C	560*820*1490mm	320lb/145kg 24h	180kg	Air/Water-cooled	220V/50Hz/1050w	156	22*22*22mm	R404A
TH-500C	760*820*1700mm	500lb/227kg/24h	300kg	Air/Water-cooled	220V/50Hz/1200w	198	22*22*22mm	R404A
TH-700C	760*820*1700mm	700lb/318kg/24h	300kg	Air/Water-cooled	220V/50Hz/1500w	234	22*22*22mm	R404A
TH-1000C	760*820*1935mm	1000lb/450kg 24h	300kg	Air/Water-cooled	220V/50Hz/2680w	342	22*22*22mm	R404A

# CUBE ICE MACHINE

Ice Dispenser



**Model** ZD-160

**Dimension (W\*D\*H)** 560\*830\*1360mm

**Optional Head** TH-320B\TH-320C  
TH-420B\TH-420C

**Daily Capacity** 180kg/24h

**Bin Capacity** 100kg

**Cooling** Air-cooled

**Power** 220V/50Hz/370W  
(Excluding the machine head)

**Ice Size** 22\*22\*22mm

**Refrigerant** R404A



24-Hour Ice-Making Test Conditions:

- Ambient Temperature: 25°C
- Water Supply Temperature: 20°C



## AUTOMATIC ICE DISPENSER

Keep them perfectly fresh with on-demand ice—right at the point of pickup. Our automatic ice dispenser lets customers cover seafood with a layer of food-grade flake ice in seconds, locking in just-caught freshness. It also wraps ice cream and frozen goods to prevent melting, and chills beverages to stay cold until you arrive home.

# CUBE ICE MACHINE

Ice & Water Vending Machine



**Model** ZD-160-A320/420A

**Dimension (W\*D\*H)** 1140\*890\*2200mm

**Optional Head** TH-320/TH-420

**Daily Capacity** 145kg 24h/190kg 24h

**Bin Capacity** 130kg

**Water Capacity** 110L

**Cooling** Air-cooled

**Power** 220V/50Hz/1800W

**Ice Size** 29\*29\*22mm

**Refrigerant** R404A



24-Hour Ice-Making Test Conditions:

- Ambient Temperature: 25°C
- Water Supply Temperature: 20°C



# ICE VENDING MACHINE

Always ready when you are—our automatic ice vending machine delivers clean, fresh ice instantly, day or night. Perfect for seafood markets, convenience stores, marinas, campgrounds, events, and everyday home use.



# JELLY ICE MACHINE

This octagon cylindrical ice is especially widely used in take-out coffee, because its slow melting speed can greatly ensure the taste of coffee for a long time.

## JELLY ICE MACHINE

Integrated mechanism ice machine



**BT-GD90/GD140**



**TH-GD90**



**TH-GD140**

Model	BT-GD90/GD140	TH-GD90	TH-GD140
Dimension (W*D*H)	680*600*750mm	530*580*895mm	660*745*1005mm
Daily Capacity	40kg/63kg 24h	90lb/40kg 24h	140lb/63kg 24h
Bin Capacity	25kg	20kg	40kg
Cooling	Air-cooled	Air-cooled	Air-cooled
Power	220V/50Hz/620w/810W	220V/50Hz/470W	220V/50Hz/715W
Ice Cube Trays	32/48	32	48
Ice Size	30*30*25mm	30*30*25mm	30*30*25mm
Refrigerant	R290 (Imported Sikoku compressor)	R290	R290



# CRESCENT ICE MACHINE

It is widely applicable in cocktail lounges, fine dining, restaurants, and bars. The crescent form of ice is generally smaller in size, and as it melts slowly, it is widely used in cocktails, soft drinks, dispensing, and other forms of drinks. It is also used for bagging purposes.

## CRESCENT ICE MACHINE

Integrated mechanism & Built-in ice machine



TH-SE150



BT-SE120

Model	TH-SE150	BT-SE120
Dimension (W*D*H)	660*710*960mm	680*600*750mm
Daily Capacity	150lb 70kg/24h	54kg/24h
Bin Capacity	36kg	30kg
Cooling	Air-cooled	Air-cooled
Power	220V/50Hz/680W	220V/50Hz/588W
Ice Cube Trays	120	72
Ice Size	30*38*13mm	30*38*13mm
Refrigerant	R290	R290

# CRESCENT ICE MACHINE

Standalone Ice Maker

24-Hour Ice-Making Test Conditions:

- Ambient Temperature: 25°C
- Water Supply Temperature: 20°C



**TH-SE600**



**TH-SE1000**



**TH-SE1500**

Model	Dimension (W*D*H)	Daily Capacity	Bin Capacity	Cooling	Power	Ice Cube Trays	Ice Size	Refrigerant
TH-SE600	760*820*1880mm	600lb/272kg 24h	300kg	Air/Water-cooled	220V/50Hz/1800w	448	30*38*13mm	R404A
TH-SE1000	760*830*1980mm	1000lb/454kg 24h	300kg	Air/Water-cooled	220V/50Hz/2500w	672	30*38*13mm	R404A
TH-SE1500	1230*845*1990mm	1500lb/681kg 24h	500kg	Water-cooled	380V/50Hz/4000w	896	30*38*13mm	R404A

# LARGE CUBE ICE MACHINE

Premium Spirit & Cocktail Service: The preferred choice for whiskey on the rocks and spirit-forward cocktails (e.g., Old Fashioned), minimizing dilution while locking in full flavor.

## LARGE CUBE ICE MACHINE

Integrated mechanism



TH-DF90



TH-DF130

Model	TH-DF90	TH-DF130
Dimension (W*D*H)	505*605*800mm	505*605*850mm
Daily Capacity	90lb/40kg 24h	130lb/59kg 24h
Bin Capacity	20kg	20kg
Cooling	Air-cooled	Air-cooled
Power	220V/50Hz/670W	220V/50Hz/820W
Ice Cube Trays	35	12
Ice Size	30*30*30mm	50*50*50mm
Refrigerant	R290	R290

# GRANDE CUBE ICE MACHINE

Standalone Ice Maker



**TH-DF280**



**TH-DF500**

Model	TH-DF280	TH-DF500
Dimension (W*D*H)	560*820*1770mm	760*820*1860mm
Daily Capacity	108kg/24h	185kg/24h
Bin Capacity	130kg	300kg
Cooling	Air-cooled	Air-cooled
Power	220V/50Hz/1000W	220V/50Hz/1470W
Ice Cube Trays	98	140
Ice Size	28*28*32mm	28*28*32mm
Refrigerant	R290	R404A



# GRANDE CUBE ICE MACHINE

Premium Spirit & Cocktail Service: The preferred choice for whiskey on the rocks and spirit-forward cocktails (e.g., Old Fashioned), minimizing dilution while locking in full flavor.

# NUGGET ICE CUBE MACHINE

Touchless Ice & Water Dispensers



<b>Model</b>	ZD-KL60
<b>Dimension (W*D*H)</b>	260*500*700mm
<b>Daily Capacity</b>	60lb/25kg 24h
<b>Cooling</b>	Air-cooled
<b>Power</b>	220V/50Hz/300W
<b>Ice Shape</b>	Nugget Ice
<b>Refrigerant</b>	R290



24-Hour Ice-Making Test Conditions:

- Ambient Temperature: 25°C
- Water Supply Temperature: 20°C

## DESKTOP ICE WATER MAKER

Nugget ice is widely used in healthcare facilities, restaurants, bars, and convenience stores. Known for blending smoothly and cooling drinks quickly, it is ideal for soft drinks, cold beverages, and blended specialties such as manganadas and frozen cocktails. In medical settings, it is also commonly provided to patients as a chewable ice option.

# FLAKE ICE MACHINE

Adjustable Ice Dispensing



Model	PB-300	PB-500	PB-1000
Dimension (W*D*H)	950*800*1870mm	1050*900*2070mm	1280*1030*2335mm
Daily Capacity	300kg/24h	500kg/24h	1000kg/24h
Bin Capacity	150kg	300kg	400kg
Cooling	Air-cooled	Air-cooled	Air-cooled
Power	220V/1500W	380V/2400W	380V/4600W
Ice Thickness	1.5~2.2mm	1.5~2.2mm	1.5~2.2mm
Ice Size	Flake Ice	Flake Ice	Flake Ice
Refrigerant	R404A	R404A	R404A



# FLAKE ICE MACHINE

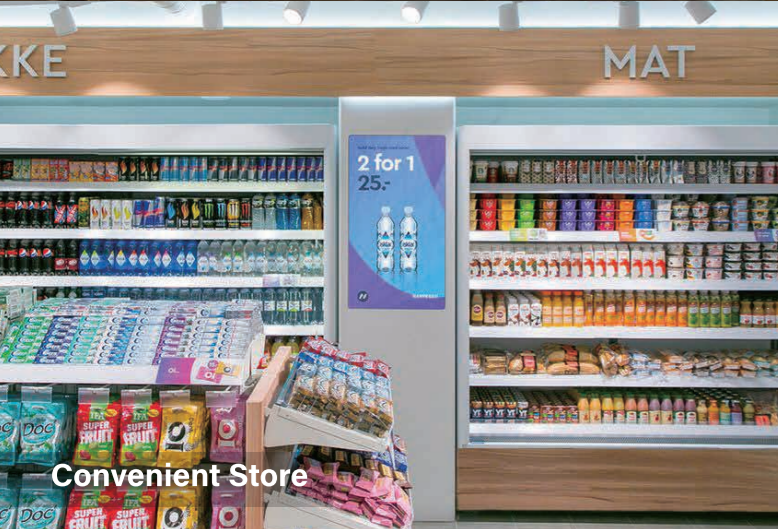
It is ideal for food display, blended beverages such as smoothies, and dessert preparation. It also pairs perfectly with all kinds of desserts—especially when used in drink blending and snow cones.



Hospitality



Food Service



Convenient Store



Tea beverage/Coffee Chains



Shared Office



SuperMarket



Fresh Food Market



Entertainment



# APPLICATION SOLUTIONS

**TRUSTED ACROSS EVERY INDUSTRY**

From the dynamic kitchens of restaurants to the sterile environments of healthcare facilities, Naixer ice machines are designed to fit seamlessly into every industry. With versatile models and premium ice production, our machines deliver the quality and reliability needed for operations across hospitality, education, and more.



# PROFESSIONAL SERVICE & SUPPORT

A seamless cycle of care: professional training, genuine parts, and proactive maintenance — all designed to keep your operations running smoothly.



## Comprehensive Warranty

We offer an extended three-year warranty on the entire machine, comprehensively covering core systems and key components. This ensures your ice maker remains stable and reliable even under prolonged heavy-duty operation—giving you greater confidence in your investment.



## Genuine Parts & Maintenance

All parts are genuine and factory-original, guaranteeing performance and longevity. Modular design allows for simple and quick maintenance, significantly reducing your operational costs and downtime.



## Professional Training

We offer systematic operation and maintenance training for partners and end-users, covering installation, usage, and full-cycle care—helping you manage equipment efficiently and enhance user experience. Our experienced technical service team is always ready to respond to your needs. Whether for technical consultation, troubleshooting, or on-site support, we are by your side.



## Contact Our Service Team

From pre-sales consultation to after-sales maintenance, we have built a full lifecycle service system to ensure every ice maker performs excellently in your commercial environment.